

**JSZW3-3,6,10A、B 型电压互感器****JSZW3-3,6,10A、B Voltage transformer type**

J S Z W 3 - 3,6,10

**概述 Description**

JSZW3-3,6,10型电压互感器为三相环氧树脂浇注户内电压互感器,适用于交流50Hz额定电压为3,6,10kV中性点非有效接地电力系统中做电压、电能测量及继电保护用。

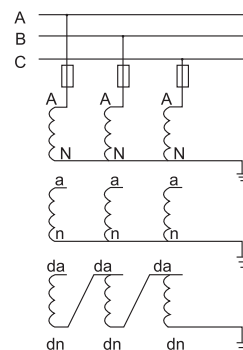
Voltage transformer JSZW3-3,6,10 is indoor, three-phase cast resin insulated structure. It's designed for voltage, power measurement and relay protection in neutral non-productive power system of rated voltage 3,6,10kV at AC50Hz.

**使用条件 Service conditon**

- 1.安装地点: 海拔高度不超过1000m;
  - 2.周围环境温度不高于+40℃, 不低于-5℃;
  - 3.空气相对湿度不大于85%(20℃);
  - 4.安装场所应无严重影响互感器绝缘的气体、蒸汽、化学沉渍、污秽及其它爆炸性、腐蚀性气体;
  - 5.安装场所无严重振动和颠簸。
- 1.Altitude: up to 1000m above sea level;
  - 2.Ambient temperature: -5℃ to +40℃;
  - 3.Ralative humidity:85%, at 20℃;
  - 4.No gas, steam, chemical, deposition, polletion, explosive gas or etching gas which may vadly influnce the insulation of the transformer;
  - 5.No chattering or bumping.

**技术参数 Technical data**

- 1.负荷的功率因数:  $\text{COS } \phi = 0.8$ (滞后);
  - 2.表面爬电距离: 满足 II 级污秽等级;
  - 3.产品性能符合标准: GB1207-1997 《电压互感器》;
  - 4.其它技术参数见下表:
- 1.Power factor of load:  $\text{COS } \phi = 0.8$ (lagging);
  - 2.Surface creepage distance:the product accords with the request of II class;
  - 3.The voltage transformers are in accordance with GB1207-1997 《Voltage transformer》 standards;
  - 4.The other technical data see following table.



常规接线方式

Routine wiring diagram