



LZZJB6-10 型电流互感器

LZZJB6-10 Current transformer type

概述 Description

LZZJB6-10适用于额定频率为50Hz，额定电压为10kV及以下的电力系统中作电气测量和电气保护用。

The current transformer is used for metering and protective relaying purposes for installation in indoor up to 10kV rated voltage, frequency 50Hz.

型号含义 Type designation



结构简介 Construction

本型互感器为全封闭支柱式结构，具有优良的绝缘性能和防潮能力，体积小，重量轻，适宜于任何位置，任意方向安装。

The current transformer is of hermetically resin casting and post type structure. It can withstand pollution and humidity. It is small in size and light in weight. It is suitable for installation at any position.

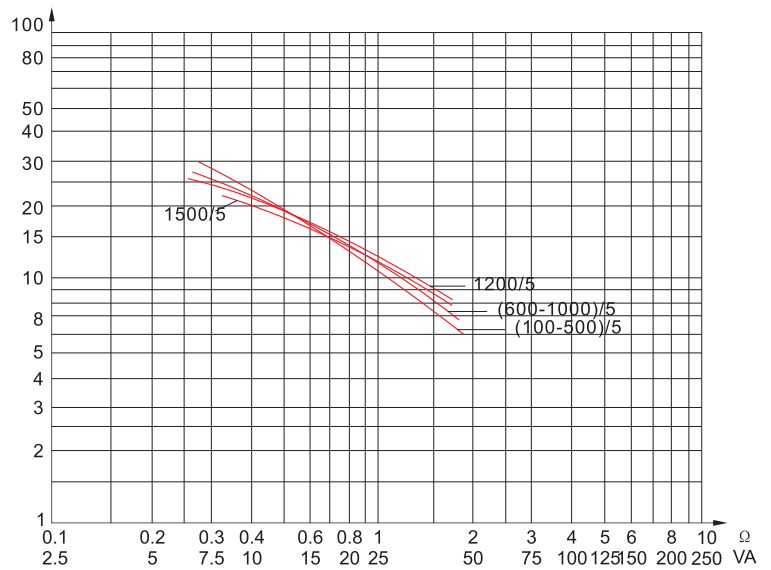
技术参数 Technical data

1. 额定绝缘水平：11.5/42/75kV；
 2. 额定一次电流，准确级组合及相应的额定输出，额定短时电流见表1；
 3. 负荷的功率因数为0.8(滞后)；
 4. 额定二次电流：5A(也可做1A)；
 5. 局部放电水平符合GB5583-85及IEC44-4《互感器局部放电测量》，其视在放电电量不大于50PC；
 6. 10P级准确限值系数与二次负荷的关系曲线见图1。
1. Rated insulation level 11.5/42/75kV；
 2. Rated primary current accuracy classes rated output and rated short-time current see table 1；
 3. Power factor: 0.8(hysteresis)；
 4. Rated secondary current: 5A(or 1A)；
 5. The measurement of partial discharge level is in accordance with GB 5583-85 and IEC444. The measurement of partial discharge of transformer apparent partial discharge level not more than 50PC.
 6. Relative curve between accuracy limit factor 10P and secondary burden.(see Fig. 1)

表(table)1

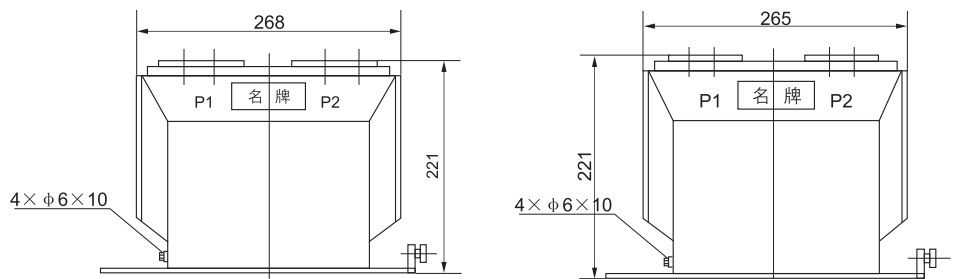
额定一次电流 Rated primary current (A)	准确级组合 Accuracy class	额定输出 Rated output(VA)	1秒热稳定电流(KA有效值) Ith/1s(r.m.s)	动稳定电流(KV峰值) Idyn(speak)
100	0.2/0.2	10/10	15	38.25
150			22.5	
200			24.5	44
300	0.2/0.5	10/10	33	59
400.500.600	0.5/10P15	10/15	41	74
800.1000.1200.1500				

10P 级准确限值系数
Accuracy limit factor of class 10P



外形尺寸 Overall Dimension

LZZJB6-10(5-1000/5A)
Overall Dimension



LZZJB6-10(1200-25005A)
Overall Dimension

